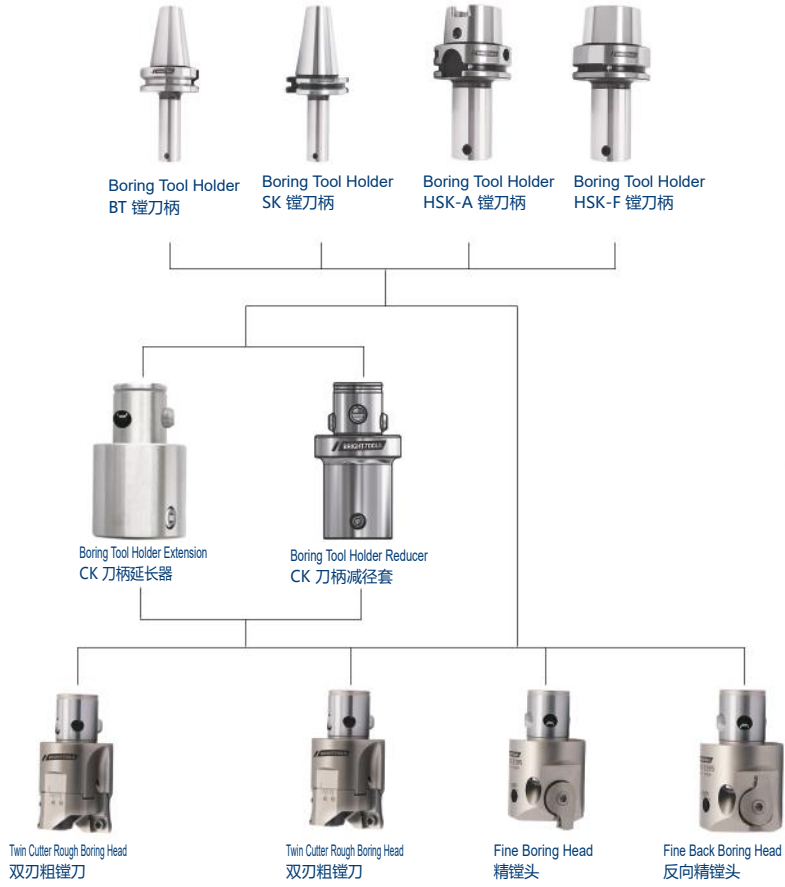


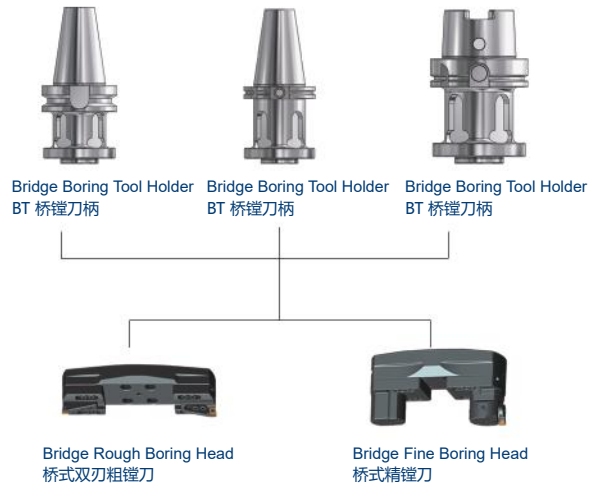
# **BORING**

## **TOOL HOLDERS**

**CK 镗刀柄系列**



**桥镗刀柄系列**



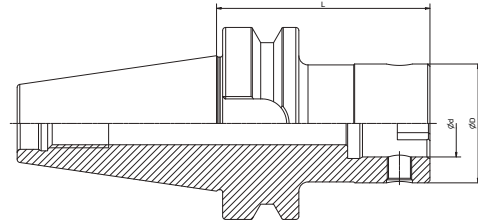
## BORING TOOLING SYSTEM BORING 工具系统

|                                     |     |
|-------------------------------------|-----|
| Boring Tool Holder.....             | 004 |
| 镗刀柄.....                            | 004 |
| Boring Tool Holder .....            | 006 |
| 镗刀柄.....                            | 006 |
| Boring Tool Holder.....             | 008 |
| 镗刀柄.....                            | 008 |
| Boring Tool Holder.....             | 011 |
| 镗刀柄.....                            | 011 |
| Boring Tool Holder Extension.....   | 012 |
| CK 刀柄延长器.....                       | 012 |
| Boring Tool Holder Reducer.....     | 013 |
| CK 刀柄减径套.....                       | 013 |
| Twin Cutter Rough Boring Head ..... | 014 |
| 双刃粗镗刀.....                          | 014 |
| Twin Cutter Rough Boring Head.....  | 015 |
| 双刃粗镗刀.....                          | 015 |
| Bridge Boring Tool Holder.....      | 016 |
| 桥镗刀柄.....                           | 016 |
| Bridge Boring Tool Holder.....      | 017 |
| 桥镗刀柄.....                           | 017 |
| Bridge Boring Tool Holder.....      | 018 |
| 桥镗刀柄.....                           | 018 |
| Bridge Rough Boring Head.....       | 019 |
| 桥式双刃粗镗刀.....                        | 019 |
| Bridge Fine Boring Head .....       | 020 |
| 桥式精镗刀.....                          | 020 |
| Fine Boring Head.....               | 021 |
| 精镗头.....                            | 021 |
| Fine Back Boring Head.....          | 022 |
| 反向精镗头.....                          | 022 |
| Small Fine Boring Head .....        | 023 |
| 精镗小刀夹.....                          | 023 |



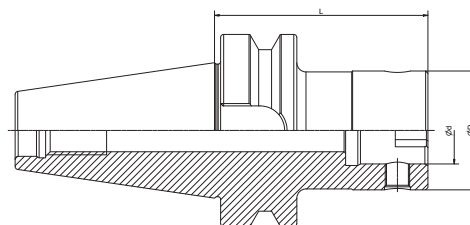
## Boring Tool Holder

### 镗刀柄



| Size         | CK No. | D  | d  | L   |
|--------------|--------|----|----|-----|
| BT30-CK1-55  | CK1    | 19 | 11 | 55  |
| BT30-CK1-70  | CK1    | 19 | 11 | 70  |
| BT30-CK2-80  | CK2    | 24 | 14 | 80  |
| BT30-CK3-80  | CK3    | 31 | 18 | 80  |
| BT30-CK4-70  | CK4    | 39 | 22 | 70  |
| BT30-CK5-70  | CK5    | 50 | 28 | 70  |
| BT30-CK6-60  | CK6    | 64 | 36 | 60  |
|              |        |    |    |     |
| BT40-CK1-70  | CK1    | 19 | 11 | 70  |
| BT40-CK1-100 | CK1    | 19 | 11 | 100 |
| BT40-CK1-130 | CK1    | 19 | 11 | 130 |
| BT40-CK2-75  | CK2    | 24 | 14 | 75  |
| BT40-CK2-100 | CK2    | 24 | 14 | 100 |
| BT40-CK2-130 | CK2    | 24 | 14 | 130 |
| BT40-CK3-80  | CK3    | 31 | 18 | 80  |
| BT40-CK3-100 | CK3    | 31 | 18 | 100 |
| BT40-CK3-135 | CK3    | 31 | 18 | 135 |
| BT40-CK3-165 | CK3    | 31 | 18 | 165 |
| BT40-CK4-70  | CK4    | 39 | 22 | 70  |
| BT40-CK4-100 | CK4    | 39 | 22 | 100 |
| BT40-CK4-150 | CK4    | 39 | 22 | 150 |
| BT40-CK4-170 | CK4    | 39 | 22 | 170 |
| BT40-CK5-80  | CK5    | 50 | 28 | 80  |
| BT40-CK5-150 | CK5    | 50 | 28 | 150 |
| BT40-CK5-180 | CK5    | 50 | 28 | 180 |
| BT40-CK6-100 | CK6    | 64 | 36 | 100 |
| BT40-CK6-150 | CK6    | 64 | 36 | 150 |
| BT40-CK6-180 | CK6    | 64 | 36 | 180 |

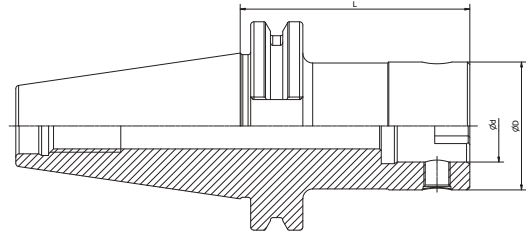
## Boring Tool Holder 镗刀柄



| Size         | CK No. | D  | d  | L   |
|--------------|--------|----|----|-----|
| BT50-CK1-80  | CK1    | 19 | 11 | 80  |
| BT50-CK1-115 | CK1    | 19 | 11 | 115 |
| BT50-CK1-145 | CK1    | 19 | 11 | 145 |
| BT50-CK2-80  | CK2    | 24 | 14 | 80  |
| BT50-CK2-105 | CK2    | 24 | 14 | 105 |
| BT50-CK2-135 | CK2    | 24 | 14 | 135 |
| BT50-CK2-165 | CK2    | 24 | 14 | 165 |
| BT50-CK3-85  | CK3    | 31 | 18 | 85  |
| BT50-CK3-110 | CK3    | 31 | 18 | 110 |
| BT50-CK3-140 | CK3    | 31 | 18 | 140 |
| BT50-CK3-170 | CK3    | 31 | 18 | 170 |
| BT50-CK4-100 | CK4    | 39 | 22 | 100 |
| BT50-CK4-160 | CK4    | 39 | 22 | 160 |
| BT50-CK4-205 | CK4    | 39 | 22 | 205 |
| BT50-CK5-90  | CK5    | 50 | 28 | 90  |
| BT50-CK5-165 | CK5    | 50 | 28 | 165 |
| BT50-CK5-210 | CK5    | 50 | 28 | 210 |
| BT50-CK5-270 | CK5    | 50 | 28 | 270 |
| BT50-CK6-85  | CK6    | 64 | 36 | 85  |
| BT50-CK6-155 | CK6    | 64 | 36 | 155 |
| BT50-CK6-215 | CK6    | 64 | 36 | 215 |
| BT50-CK6-250 | CK6    | 64 | 36 | 250 |
| BT50-CK6-300 | CK6    | 64 | 36 | 300 |
| BT50-CK6-350 | CK6    | 64 | 36 | 350 |
| BT50-CK7-85  | CK7    | 90 | 46 | 85  |
| BT50-CK7-100 | CK7    | 90 | 46 | 100 |
| BT50-CK7-180 | CK7    | 90 | 46 | 180 |
| BT50-CK7-250 | CK7    | 90 | 46 | 250 |
| BT50-CK7-320 | CK7    | 90 | 46 | 320 |
| BT50-CK7-350 | CK7    | 90 | 46 | 350 |

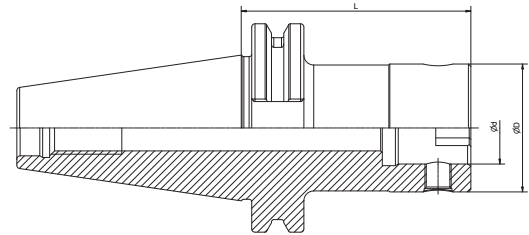
## Boring Tool Holder

### 镗刀柄



| Size         | CK No. | D  | d  | L   |
|--------------|--------|----|----|-----|
| SK30-CK1-70  | CK1    | 19 | 11 | 70  |
| SK30-CK2-70  | CK2    | 24 | 14 | 70  |
| SK30-CK3-75  | CK3    | 31 | 18 | 75  |
| SK30-CK4-50  | CK4    | 39 | 22 | 50  |
| SK30-CK5-50  | CK5    | 50 | 28 | 50  |
| SK30-CK6-60  | CK6    | 64 | 36 | 60  |
|              |        |    |    |     |
| SK40-CK1-70  | CK1    | 19 | 11 | 70  |
| SK40-CK1-100 | CK1    | 19 | 11 | 100 |
| SK40-CK2-50  | CK2    | 24 | 14 | 50  |
| SK40-CK2-100 | CK2    | 24 | 14 | 100 |
| SK40-CK3-50  | CK3    | 31 | 18 | 50  |
| SK40-CK3-100 | CK3    | 31 | 18 | 100 |
| SK40-CK3-135 | CK3    | 31 | 18 | 135 |
| SK40-CK3-165 | CK3    | 31 | 18 | 165 |
| SK40-CK4-50  | CK4    | 39 | 22 | 20  |
| SK40-CK4-100 | CK4    | 39 | 22 | 100 |
| SK40-CK4-150 | CK4    | 39 | 22 | 150 |
| SK40-CK5-80  | CK5    | 50 | 28 | 50  |
| SK40-CK5-100 | CK5    | 50 | 28 | 100 |
| SK40-CK5-150 | CK5    | 50 | 28 | 150 |
| SK40-CK5-180 | CK5    | 50 | 28 | 180 |
| SK40-CK6-90  | CK6    | 64 | 36 | 90  |
| SK40-CK6-150 | CK6    | 64 | 36 | 150 |
| SK40-CK6-180 | CK6    | 64 | 36 | 180 |
| SK40-CK7-100 | CK7    | 90 | 46 | 100 |

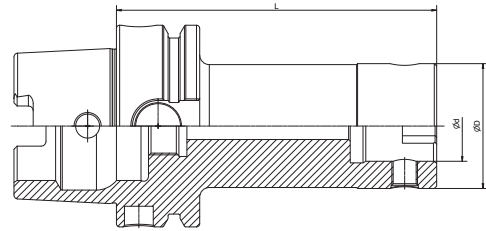
## Boring Tool Holder 镗刀柄



| Size         | CK No. | D  | d  | L   |
|--------------|--------|----|----|-----|
| SK50-CK1-80  | CK1    | 19 | 11 | 80  |
| SK50-CK2-80  | CK2    | 24 | 14 | 80  |
| SK50-CK2-105 | CK2    | 24 | 14 | 105 |
| SK50-CK2-135 | CK2    | 24 | 14 | 135 |
| SK50-CK2-165 | CK2    | 24 | 14 | 165 |
| SK50-CK3-85  | CK3    | 31 | 18 | 85  |
| SK50-CK3-110 | CK3    | 31 | 18 | 110 |
| SK50-CK3-140 | CK3    | 31 | 18 | 140 |
| SK50-CK3-170 | CK3    | 31 | 18 | 170 |
| SK50-CK4-70  | CK4    | 39 | 22 | 70  |
| SK50-CK4-100 | CK4    | 39 | 22 | 100 |
| SK50-CK4-160 | CK4    | 39 | 22 | 160 |
| SK50-CK4-200 | CK4    | 39 | 22 | 200 |
| SK50-CK5-90  | CK5    | 50 | 28 | 90  |
| SK50-CK5-160 | CK5    | 50 | 28 | 160 |
| SK50-CK5-210 | CK5    | 50 | 28 | 210 |
| SK50-CK5-250 | CK5    | 50 | 28 | 250 |
| SK50-CK6-85  | CK6    | 64 | 36 | 85  |
| SK50-CK6-160 | CK6    | 64 | 36 | 160 |
| SK50-CK6-200 | CK6    | 64 | 36 | 200 |
| SK50-CK6-250 | CK6    | 64 | 36 | 250 |
| SK50-CK6-300 | CK6    | 64 | 36 | 300 |
| SK50-CK7-85  | CK7    | 90 | 46 | 85  |
| SK50-CK7-150 | CK7    | 90 | 46 | 150 |
| SK50-CK7-210 | CK7    | 90 | 46 | 210 |
| SK50-CK7-250 | CK7    | 90 | 46 | 250 |
| SK50-CK7-300 | CK7    | 90 | 46 | 300 |
| SK50-CK7-350 | CK7    | 90 | 46 | 350 |

## Boring Tool Holder

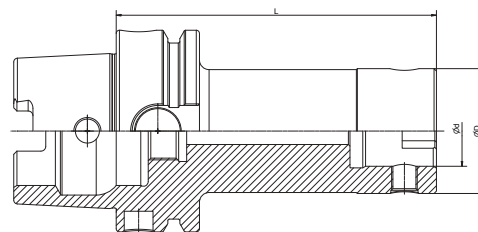
### 镗刀柄



| Size          | CK No. | D  | d  | L  |
|---------------|--------|----|----|----|
| HSK40A-CK1-75 | CK1    | 19 | 11 | 75 |
| HSK40A-CK2-85 | CK2    | 24 | 14 | 85 |
| HSK40A-CK3-80 | CK3    | 31 | 18 | 80 |
| HSK40A-CK4-75 | CK4    | 39 | 22 | 75 |
|               |        |    |    |    |
| HSK50A-CK1-75 | CK1    | 19 | 11 | 75 |
| HSK50A-CK2-85 | CK2    | 24 | 14 | 85 |
| HSK50A-CK3-80 | CK3    | 31 | 18 | 80 |
| HSK50A-CK4-75 | CK4    | 39 | 22 | 75 |
| HSK50A-CK5-85 | CK5    | 50 | 28 | 85 |



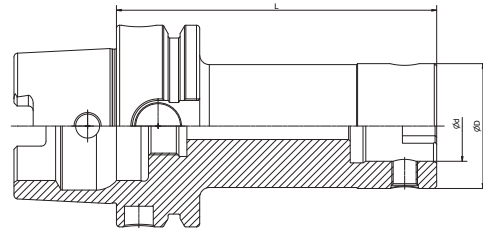
## Boring Tool Holder 镗刀柄



| Size           | CK No. | D  | d  | L   |
|----------------|--------|----|----|-----|
| HSK63A-CK1-70  | CK1    | 19 | 11 | 70  |
| HSK63A-CK1-100 | CK1    | 19 | 11 | 100 |
| HSK63A-CK2-75  | CK2    | 24 | 14 | 75  |
| HSK63A-CK2-100 | CK2    | 24 | 14 | 100 |
| HSK63A-CK2-130 | CK2    | 24 | 14 | 130 |
| HSK63A-CK3-80  | CK3    | 31 | 18 | 80  |
| HSK63A-CK3-100 | CK3    | 31 | 18 | 100 |
| HSK63A-CK3-135 | CK3    | 31 | 18 | 135 |
| HSK63A-CK3-165 | CK3    | 31 | 18 | 165 |
| HSK63A-CK4-70  | CK4    | 39 | 22 | 70  |
| HSK63A-CK4-100 | CK4    | 39 | 22 | 100 |
| HSK63A-CK4-150 | CK4    | 39 | 22 | 150 |
| HSK63A-CK4-170 | CK4    | 39 | 22 | 170 |
| HSK63A-CK5-80  | CK5    | 50 | 28 | 80  |
| HSK63A-CK5-100 | CK5    | 50 | 28 | 100 |
| HSK63A-CK5-150 | CK5    | 50 | 28 | 150 |
| HSK63A-CK5-180 | CK5    | 50 | 28 | 180 |
| HSK63A-CK6-100 | CK6    | 64 | 36 | 100 |
| HSK63A-CK6-150 | CK6    | 64 | 36 | 150 |
| HSK63A-CK6-180 | CK6    | 64 | 36 | 180 |

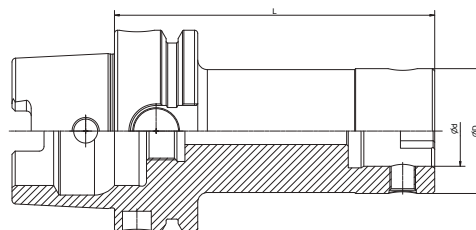
## Boring Tool Holder

### 镗刀柄



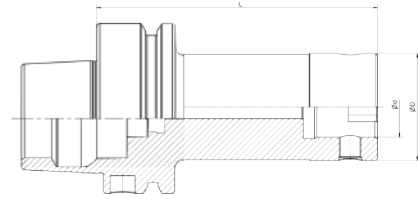
| Size            | CK No. | D  | d  | L   |
|-----------------|--------|----|----|-----|
| HSK63A-CK1-70   | CK1    | 19 | 11 | 70  |
| HSK63A-CK1-100T | CK1    | 19 | 11 | 100 |
| HSK63A-CK2-75   | CK2    | 24 | 14 | 75  |
| HSK63A-CK2-100  | CK2    | 24 | 14 | 100 |
| HSK63A-CK2-130T | CK2    | 24 | 14 | 130 |
| HSK63A-CK3-80   | CK3    | 31 | 18 | 80  |
| HSK63A-CK3-100  | CK3    | 31 | 18 | 100 |
| HSK63A-CK3-135T | CK3    | 31 | 18 | 135 |
| HSK63A-CK3-165T | CK3    | 31 | 18 | 165 |
| HSK63A-CK4-70   | CK4    | 39 | 22 | 70  |
| HSK63A-CK4-100  | CK4    | 39 | 22 | 100 |
| HSK63A-CK4-150T | CK4    | 39 | 22 | 150 |
| HSK63A-CK4-170T | CK4    | 39 | 22 | 170 |
| HSK63A-CK5-80   | CK5    | 50 | 28 | 80  |
| HSK63A-CK5-100  | CK5    | 50 | 28 | 100 |
| HSK63A-CK5-150  | CK5    | 50 | 28 | 150 |
| HSK63A-CK5-180  | CK5    | 50 | 28 | 180 |
| HSK63A-CK6-100  | CK6    | 64 | 36 | 100 |
| HSK63A-CK6-150  | CK6    | 64 | 36 | 150 |
| HSK63A-CK6-180  | CK6    | 64 | 36 | 180 |

**Boring Tool Holder**  
**镗刀柄**



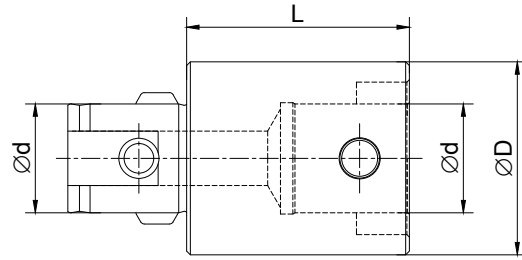
| Size             | CK No. | D  | d  | L   |
|------------------|--------|----|----|-----|
| HSK100A-CK1-115  | CK1    | 19 | 11 | 115 |
| HSK100A-CK1-145T | CK1    | 19 | 11 | 145 |
| HSK100A-CK2-105  | CK2    | 24 | 14 | 105 |
| HSK100A-CK2-135  | CK2    | 24 | 14 | 135 |
| HSK100A-CK2-165  | CK2    | 24 | 14 | 165 |
| HSK100A-CK3-110  | CK3    | 31 | 18 | 110 |
| HSK100A-CK3-140T | CK3    | 31 | 18 | 140 |
| HSK100A-CK3-170T | CK3    | 31 | 18 | 170 |
| HSK100A-CK4-100  | CK4    | 39 | 22 | 100 |
| HSK100A-CK4-160T | CK4    | 39 | 22 | 160 |
| HSK100A-CK4-205T | CK4    | 39 | 22 | 205 |
| HSK100A-CK5-90   | CK5    | 50 | 28 | 90  |
| HSK100A-CK5-165  | CK5    | 50 | 28 | 165 |
| HSK100A-CK5-210T | CK5    | 50 | 28 | 210 |
| HSK100A-CK5-270T | CK5    | 50 | 28 | 270 |
| HSK100A-CK6-85   | CK6    | 64 | 36 | 85  |
| HSK100A-CK6-155  | CK6    | 64 | 36 | 155 |
| HSK100A-CK6-215  | CK6    | 64 | 36 | 215 |
| HSK100A-CK6-250  | CK6    | 64 | 36 | 250 |
| HSK100A-CK6-300T | CK6    | 64 | 36 | 300 |
| HSK100A-CK7-125  | CK7    | 90 | 46 | 125 |
| HSK100A-CK7-200  | CK7    | 90 | 46 | 200 |
| HSK100A-CK7-275  | CK7    | 90 | 46 | 275 |

**Boring Tool Holder**  
**镗刀柄**



| Size           | CK No. | D  | L   |
|----------------|--------|----|-----|
| HSK63F-CK1-78  | CK1    | 19 | 110 |
| HSK63F-CK2-90  | CK2    | 24 | 125 |
| HSK63F-CK3-100 | CK3    | 31 | 140 |
| HSK63F-CK4-93  | CK4    | 39 | 140 |
| HSK63F-CK5-83  | CK5    | 50 | 140 |

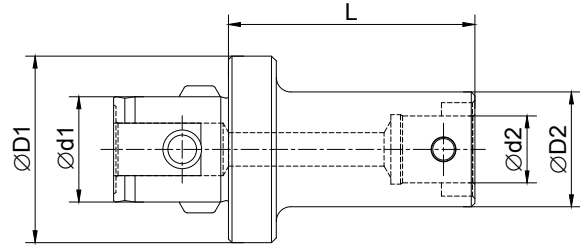
## Boring Tool Holder Extension CK 刀柄延长器



| Size     | CK No. | D  | L   |
|----------|--------|----|-----|
| CK11-20  | CK1    | 19 | 20  |
| CK11-30  | CK1    | 19 | 30  |
| CK22-30  | CK2    | 24 | 30  |
| CK22-45  | CK2    | 24 | 45  |
| CK33-30  | CK3    | 31 | 30  |
| CK33-45  | CK3    | 31 | 45  |
| CK44-45  | CK4    | 39 | 45  |
| CK44-60  | CK4    | 39 | 60  |
| CK55-60  | CK5    | 50 | 60  |
| CK55-90  | CK5    | 50 | 90  |
| CK66-60  | CK6    | 64 | 60  |
| CK66-100 | CK6    | 64 | 100 |
| CK77-105 | CK7    | 90 | 105 |

**Usage:** connect boring tool holder and boring head, to extend the working depth.

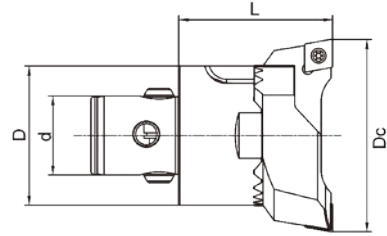
## Boring Tool Holder Reducer CK 刀柄减径套



| Size     | CK No.1 | CK No.2 | D1 | D2 | L    |
|----------|---------|---------|----|----|------|
| CK21- 65 | CK2     | CK1     | 24 | 19 | 36   |
| CK31- 60 | CK3     | CK1     | 31 | 19 | 40.5 |
| CK32- 60 | CK3     | CK2     | 31 | 24 | 34.5 |
| CK41- 75 | CK4     | CK1     | 39 | 19 | 57.5 |
| CK42- 75 | CK4     | CK2     | 39 | 24 | 51.5 |
| CK43- 75 | CK4     | CK3     | 39 | 31 | 47   |
| CK51- 70 | CK5     | CK1     | 50 | 19 | 57.5 |
| CK52- 70 | CK5     | CK2     | 50 | 24 | 51.5 |
| CK52-100 | CK5     | CK2     | 50 | 24 | 81.5 |
| CK53- 70 | CK5     | CK3     | 50 | 31 | 47   |
| CK53-100 | CK5     | CK3     | 50 | 31 | 88   |
| CK54- 70 | CK5     | CK4     | 50 | 39 | 40   |
| CK54-100 | CK5     | CK4     | 50 | 39 | 70   |
| CK61- 65 | CK6     | CK1     | 64 | 19 | 66.5 |
| CK62- 80 | CK6     | CK2     | 64 | 24 | 60.6 |
| CK62-115 | CK6     | CK2     | 64 | 24 | 95.5 |
| CK63- 80 | CK6     | CK3     | 64 | 31 | 56   |
| CK63-115 | CK6     | CK3     | 64 | 31 | 91   |
| CK64- 80 | CK6     | CK4     | 64 | 39 | 49   |
| CK64-115 | CK6     | CK4     | 64 | 39 | 84   |
| CK65- 80 | CK6     | CK5     | 64 | 50 | 39   |
| CK65-115 | CK6     | CK5     | 64 | 50 | 74   |
| CK76-160 | CK7     | CK6     | 90 | 64 | 106  |

**Usage:** to connect with small size boring head.

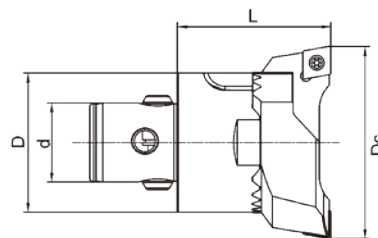
## Twin Cutter Rough Boring Head 双刃粗镗刀 (装 CC 刀片)



| Boring Head Size | Dc      | D  | d  | L   | CK No. | Insert Seat Size | Insert   | Screw  | Key |
|------------------|---------|----|----|-----|--------|------------------|----------|--------|-----|
| CK1-R2026-33     | 20-26   | 19 | 11 | 33  | CK1    | 2026-CC06        | CC..0602 | M2.5X6 | T8  |
| CK2-R2533-36     | 25-33   | 24 | 14 | 36  | CK2    | 2533-CC06        | CC..0602 | M2.5X6 | T8  |
| CK3-R3242-40     | 32-42   | 31 | 18 | 40  | CK3    | 3242-CC09        | CC..09T3 | M3.5X9 | T15 |
| CK4-R4154-47     | 41-54   | 39 | 22 | 47  | CK4    | 4154-CC09        | CC..09T3 | M3.5X9 | T15 |
| CK5-R5370-58     | 53-70   | 50 | 28 | 58  | CK5    | 5370-CC12        | CC..1204 | M5X12  | T20 |
| CK6-R68110-72    | 68-90   | 64 | 36 | 72  | CK6    | 6890-CC12        | CC..1204 | M5X12  | T20 |
| CK6-R68110-72    | 88-110  | 64 | 36 | 72  | CK6    | 88110-CC12       | CC..1204 | M5X12  | T20 |
| CK6-R98153-72    | 98-126  | 64 | 36 | 72  | CK6    | 98126-CC12       | CC..1204 | M5X12  | T20 |
| CK6-R98153-72    | 125-153 | 64 | 36 | 72  | CK6    | 125153-CC12      | CC..1204 | M5X12  | T20 |
| CK6-R148203-72   | 148-176 | 64 | 36 | 72  | CK6    | 148176-CC12      | CC..1204 | M5X12  | T20 |
| CK6-R148203-72   | 175-203 | 64 | 36 | 72  | CK6    | 175203-CC12      | CC..1204 | M5X12  | T20 |
| CK7-R98153-87    | 98-126  | 90 | 46 | 87  | CK7    | 98126-CC12       | CC..1204 | M5X12  | T20 |
| CK7-R98153-87    | 125-153 | 90 | 46 | 87  | CK7    | 125153-CC12      | CC..1204 | M5X12  | T20 |
| CK7-R148203-117  | 148-176 | 90 | 46 | 117 | CK7    | 148176-CC12      | CC..1204 | M5X12  | T20 |
| CK7-R148203-117  | 175-203 | 90 | 46 | 117 | CK7    | 175203-CC12      | CC..1204 | M5X12  | T20 |

**Delivery:** inserts excluded, please purchase separately.  
Please specify boring head and insert seat size.

## Twin Cutter Rough Boring Head 双刃粗镗刀 (装 SC 刀片)

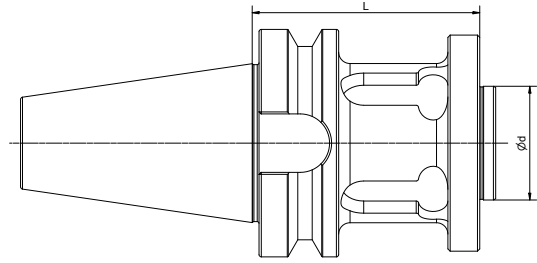


| Boring Head Size    | Dc      | D  | d  | L   | CK No. | Insert Seat Size | Insert   | Screw  | Key |
|---------------------|---------|----|----|-----|--------|------------------|----------|--------|-----|
| CK1-R2026-33        | 20-26   | 19 | 11 | 33  | CK1    | 2026-SC06        | SC..0602 | M2.5X6 | T8  |
| CK2-R2533-36        | 25-33   | 24 | 14 | 36  | CK2    | 2533-SC06        | SC..0602 | M2.5X6 | T8  |
| CK3-R3242-40        | 32-42   | 31 | 18 | 40  | CK3    | 3242-SC09        | SC..09T3 | M3.5X9 | T15 |
| CK4-R4154-47        | 41-54   | 39 | 22 | 47  | CK4    | 4154-SC09        | SC..09T3 | M3.5X9 | T15 |
| CK5-R5370-58        | 53-70   | 50 | 28 | 58  | CK5    | 5370-SC12        | SC..1204 | M5X12  | T20 |
| CK6-6890-SC12-72    | 68-90   | 64 | 36 | 72  | CK6    | 6890-SC12        | SC..1204 | M5X12  | T20 |
| CK6-88110-SC12-72   | 88-110  | 64 | 36 | 72  | CK6    | 88110-SC12       | SC..1204 | M5X12  | T20 |
| CK6-98126-SC12-72   | 98-126  | 64 | 36 | 72  | CK6    | 98126-SC12       | SC..1204 | M5X12  | T20 |
| CK6-125153-SC12-72  | 125-153 | 64 | 36 | 72  | CK6    | 125153-SC12      | SC..1204 | M5X12  | T20 |
| CK6-148176-SC12-72  | 148-176 | 64 | 36 | 72  | CK6    | 148176-SC12      | SC..1204 | M5X12  | T20 |
| CK6-175203-SC12-72  | 175-203 | 64 | 36 | 72  | CK6    | 175203-SC12      | SC..1204 | M5X12  | T20 |
| CK7-98126-SC12-87   | 98-126  | 90 | 46 | 87  | CK7    | 98126-SC12       | SC..1204 | M5X12  | T20 |
| CK7-125153-SC12-87  | 125-153 | 90 | 46 | 87  | CK7    | 125153-SC12      | SC..1204 | M5X12  | T20 |
| CK7-148176-SC12-117 | 148-176 | 90 | 46 | 117 | CK7    | 148176-SC12      | SC..1204 | M5X12  | T20 |
| CK7-175203-SC12-117 | 175-203 | 90 | 46 | 117 | CK7    | 175203-SC12      | SC..1204 | M5X12  | T20 |

**Delivery:** inserts excluded, please purchase separately.  
Please specify boring head and insert seat size.

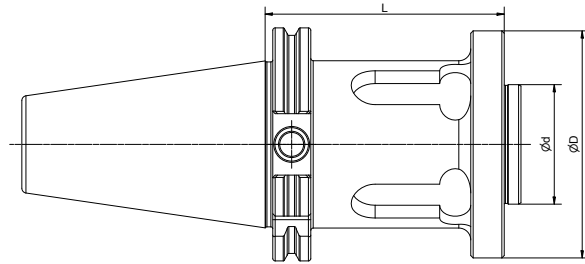


## Bridge Boring Tool Holder BST 桥镗刀柄



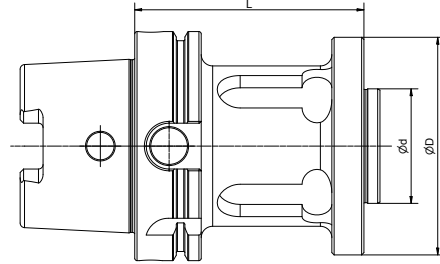
| Size           | D   | d  | L   |
|----------------|-----|----|-----|
| BT40-BST32-60  | 100 | 40 | 60  |
| BT40-BST32-100 | 100 | 40 | 100 |
| BT40-BST32-150 | 100 | 40 | 150 |
| BT50-BST32-100 | 100 | 40 | 100 |
| BT50-BST32-150 | 100 | 40 | 150 |
| BT50-BST32-200 | 100 | 40 | 200 |
| BT50-BST32-250 | 100 | 40 | 250 |
| BT50-BST32-300 | 100 | 40 | 300 |
| BT50-BST32-350 | 100 | 40 | 350 |
| BT50-BST40-100 | 136 | 40 | 100 |
| BT50-BST40-250 | 136 | 40 | 250 |

## Bridge Boring Tool Holder BST 桥镗刀柄



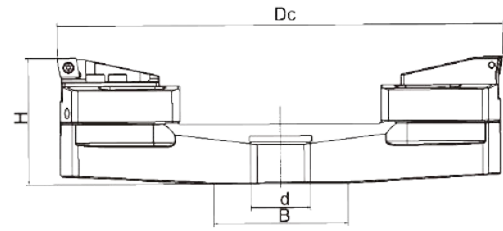
| Size           | D   | d  | L   |
|----------------|-----|----|-----|
| SK40-BST32-60  | 100 | 40 | 60  |
| SK50-BST32-100 | 100 | 40 | 100 |
| SK50-BST32-150 | 100 | 40 | 150 |
| SK50-BST32-200 | 100 | 40 | 200 |
| SK50-BST32-250 | 100 | 40 | 250 |
| SK50-BST32-300 | 100 | 40 | 300 |
| SK50-BST40-100 | 136 | 40 | 100 |
| SK50-BST40-250 | 136 | 40 | 250 |

## Bridge Boring Tool Holder BST 桥镗刀柄



| Size            | D  | d  | L   |
|-----------------|----|----|-----|
| HSK100A-BST-100 | 94 | 40 | 100 |
| HSK100A-BST-150 | 94 | 40 | 150 |
| HSK100A-BST-200 | 94 | 40 | 200 |
| HSK100A-BST-250 | 94 | 40 | 300 |
| HSK100A-BST-300 | 94 | 40 | 350 |

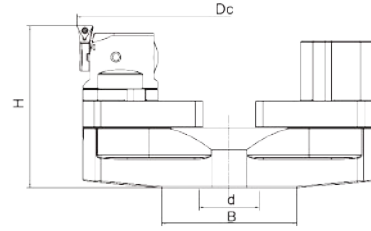
## Bridge Rough Boring Head 桥式双刃粗镗刀



| Boring Head Size | Dc      | H   | d  | B   | Bridge     | Clamp Base | Insert Seat Size |
|------------------|---------|-----|----|-----|------------|------------|------------------|
| BR200300-40R     | 200-300 | 85  | 40 | 88  | 200300.40R | BR7080-28  | BR28-15-CC12     |
| BR300400-40R     | 300-400 | 85  | 40 | 88  | 300400.40R | BR7080-28  | BR28-15-CC12     |
| BR400500-60R     | 400-500 | 90  | 60 | 130 | 400500.60R | BR7080-28  | BR28-15-CC12     |
| BR500600-60R     | 500-600 | 95  | 60 | 130 | 500600.60R | BR7080-28  | BR28-15-CC12     |
| BR600700-60R     | 600-700 | 100 | 60 | 130 | 600700.60R | BR7080-28  | BR28-15-CC12     |

**Delivery:** inserts excluded, please purchase separately.

## Bridge Fine Boring Head 桥式精镗刀

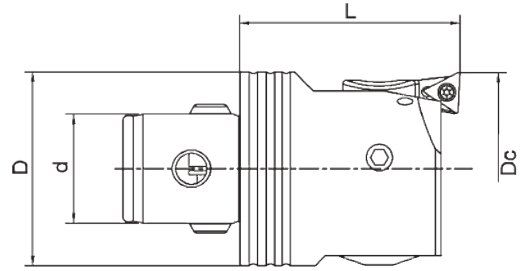


| Boring Head Size | Dc      | H   | d  | B   | Bridge     | Clamp Base | Balance Weight | Insert Seat Size |
|------------------|---------|-----|----|-----|------------|------------|----------------|------------------|
| BF200300-40R     | 200-300 | 107 | 40 | 88  | 200300.40R | BF7080-34  | BF7080-66      | F5-1             |
| BF300400-40R     | 300-400 | 107 | 40 | 88  | 300400.40R | BF7080-34  | BF7080-66      | F5-1             |
| BF400500-60R     | 400-500 | 112 | 60 | 130 | 400500.60R | BF7080-34  | BF7080-66      | F5-2             |
| BF500600-60R     | 500-600 | 117 | 60 | 130 | 500600.60R | BF7080-34  | BF7080-66      | F5-2             |
| BF600700-60R     | 600-700 | 121 | 60 | 130 | 600700.60R | BF7080-34  | BF7080-66      | F5-3             |

**Delivery:** insert excluded, please purchase separately.

## Fine Boring Head

### 精镗头



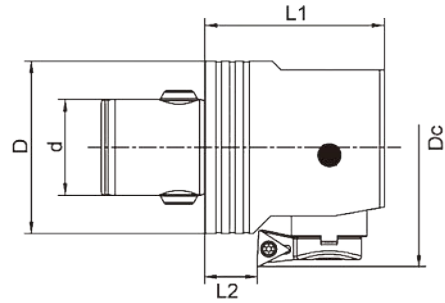
| Boring Head Size | Dc      | D  | d  | L   | CK No. | Insert Seat Size | Insert |
|------------------|---------|----|----|-----|--------|------------------|--------|
| CK1-F2036-33     | 20-26   | 19 | 11 | 33  | CK1    | F1-1             | TP08   |
| CK1-F2036-33     | 25-31   | 19 | 11 | 33  | CK1    | F1-2             | TP08   |
| CK1-F2036-33     | 30-36   | 19 | 11 | 33  | CK1    | F1-3             | TP08   |
| CK2-F2547-36     | 25-33   | 24 | 14 | 36  | CK2    | F2-1             | TP08   |
| CK2-F2547-36     | 32-40   | 24 | 14 | 36  | CK2    | F2-2             | TP08   |
| CK2-F2547-36     | 39-47   | 24 | 14 | 36  | CK2    | F2-3             | TP08   |
| CK3-F3260-40     | 32-42   | 31 | 18 | 40  | CK3    | F3-1             | TP08   |
| CK3-F3260-40     | 41-51   | 31 | 18 | 40  | CK3    | F3-2             | TP08   |
| CK3-F3260-40     | 50-60   | 31 | 18 | 40  | CK3    | F3-3             | TP08   |
| CK4-F4166-46     | 41-54   | 39 | 22 | 46  | CK4    | F4-1             | TC11   |
| CK4-F4166-46     | 50-63   | 39 | 22 | 46  | CK4    | F4-2             | TC11   |
| CK4-F4166-46     | 61-74   | 39 | 22 | 46  | CK4    | F4-3             | TC11   |
| CK5-F5395-57     | 53-70   | 50 | 28 | 57  | CK5    | F5-1             | TC11   |
| CK5-F5395-57     | 65-82   | 50 | 28 | 57  | CK5    | F5-2             | TC11   |
| CK5-F5395-57     | 78-95   | 50 | 28 | 57  | CK5    | F5-3             | TC11   |
| CK6-F68150-71    | 68-100  | 64 | 36 | 71  | CK6    | F6-1             | TC11   |
| CK6-F68150-71    | 94-126  | 64 | 36 | 71  | CK6    | F6-2             | TC11   |
| CK6-F68150-71    | 118-150 | 64 | 36 | 71  | CK6    | F6-3             | TC11   |
| CK6-F100203-71   | 100-153 | 64 | 36 | 71  | CK6    | F6-1             | TC11   |
| CK6-F100203-71   | 126-179 | 64 | 36 | 71  | CK6    | F6-2             | TC11   |
| CK6-F100203-71   | 150-203 | 64 | 36 | 71  | CK6    | F6-3             | TC11   |
| CK7-F100203-71   | 100-153 | 90 | 46 | 117 | CK7    | F6-1             | TC11   |
| CK7-F100203-71   | 126-179 | 90 | 46 | 117 | CK7    | F6-2             | TC11   |
| CK7-F100203-71   | 150-203 | 90 | 46 | 117 | CK7    | F6-3             | TC11   |

**Delivery:**

F\*-1 insert seat is included, please order F\*-2 and F\*-3 separately.

Insert excluded, please purchase separately.

## Fine Back Boring Head 反向精镗头

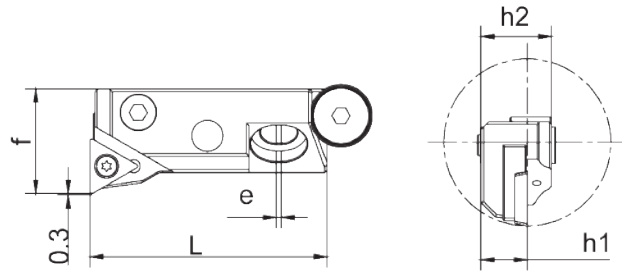


| Boring Head Size | Dc      | D  | d  | L1 | L2   | CK No. | Insert Seat Size | Insert |
|------------------|---------|----|----|----|------|--------|------------------|--------|
| CK1-FB2036-33    | 31-31   | 19 | 11 | 33 | 10.5 | CK1    | F1-2             | TP08   |
| CK1-FB2036-33    | 30-36   | 19 | 11 | 33 | 10.5 | CK1    | F1-3             | TP08   |
| CK2-FB2547-36    | 36-40   | 24 | 14 | 36 | 11.5 | CK2    | F2-2             | TP08   |
| CK2-FB2547-36    | 39-47   | 24 | 14 | 36 | 11.5 | CK2    | F2-3             | TP08   |
| CK3-FB3260-40    | 46-51   | 31 | 18 | 40 | 10   | CK3    | F3-2             | TP08   |
| CK3-FB3260-40    | 50-60   | 31 | 18 | 40 | 10   | CK3    | F3-3             | TP08   |
| CK4-FB4166-46    | 53-63   | 39 | 22 | 46 | 14   | CK4    | F4-2             | TC11   |
| CK4-FB4166-46    | 61-74   | 39 | 22 | 46 | 14   | CK4    | F4-3             | TC11   |
| CK5-FB5395-57    | 62-70   | 50 | 28 | 57 | 19   | CK5    | F5-1             | TC11   |
| CK5-FB5395-57    | 65-82   | 50 | 28 | 57 | 19   | CK5    | F5-2             | TC11   |
| CK5-FB5395-57    | 78-95   | 50 | 28 | 57 | 19   | CK5    | F5-3             | TC11   |
| CK6-FB68150-71   | 80-100  | 64 | 36 | 71 | 22   | CK6    | F6-1             | TC11   |
| CK6-FB68150-71   | 94-126  | 64 | 36 | 71 | 22   | CK6    | F6-2             | TC11   |
| CK6-FB68150-71   | 118-150 | 64 | 36 | 71 | 22   | CK6    | F6-3             | TC11   |
| CK6-FB100203-71  | 112-153 | 64 | 36 | 71 | 22   | CK6    | F6-1             | TC11   |
| CK6-FB100203-71  | 126-179 | 64 | 36 | 71 | 22   | CK6    | F6-2             | TC11   |
| CK6-FB100203-71  | 150-203 | 64 | 36 | 71 | 22   | CK6    | F6-3             | TC11   |
| CK7-FB100203-71  | 112-153 | 90 | 46 | 71 | 38   | CK7    | F6-1             | TC11   |
| CK7-FB100203-71  | 126-179 | 90 | 46 | 71 | 38   | CK7    | F6-2             | TC11   |
| CK7-FB100203-71  | 150-203 | 90 | 46 | 71 | 38   | CK7    | F6-3             | TC11   |

**Delivery:**

Insert excluded, please purchase separately.

## Small Fine Boring Head 精镗小刀夹



| Size          | Degree | Dmin | L    | h1  | h2   | e | f  | r   | Insert     |
|---------------|--------|------|------|-----|------|---|----|-----|------------|
| DF-1695L-CC06 | 95     | 28   | 45.5 | 8.8 | 13.5 | 1 | 16 | 0.4 | CC..0602.. |
| DF-1695R-CC06 | 95     | 28   | 45.5 | 8.8 | 13.5 | 1 | 16 | 0.4 | CC..0602.. |
| DF-1695L-TP09 | 95     | 28   | 45.5 | 8.8 | 13.5 | 1 | 16 | 0.4 | TP..0902.. |
| DF-1695R-TP09 | 95     | 28   | 45.5 | 8.8 | 13.5 | 1 | 16 | 0.4 | TP..0902.. |
| DF-2095L-TC11 | 95     | 36   | 45.5 | 8.8 | 13.5 | 1 | 20 | 0.4 | TC..1102.. |
| DF-2095R-TC11 | 95     | 36   | 45.5 | 8.8 | 13.5 | 1 | 20 | 0.4 | TC..1102.. |
| DF-1690L-CC06 | 90     | 28   | 45.5 | 8.8 | 13.5 | 1 | 16 | 0.4 | CC..0602.. |
| DF-1690R-CC06 | 90     | 28   | 45.5 | 8.8 | 13.5 | 1 | 16 | 0.4 | CC..0602.. |
| DF-1690L-TP09 | 90     | 28   | 45.5 | 8.8 | 13.5 | 1 | 16 | 0.4 | TP..0902.. |
| DF-1690R-TP09 | 90     | 28   | 45.5 | 8.8 | 13.5 | 1 | 16 | 0.4 | TP..0902.. |
| DF-2090L-TC11 | 90     | 36   | 45.5 | 8.8 | 13.5 | 1 | 20 | 0.4 | TC..1102.. |
| DF-2090R-TC11 | 90     | 36   | 45.5 | 8.8 | 13.5 | 1 | 20 | 0.4 | TC..1102.. |

**Delivery:** insert excluded, please purchase separately.