

**BORING TOOLS**

**BORING**

# BORING TOOLING SYSTEM

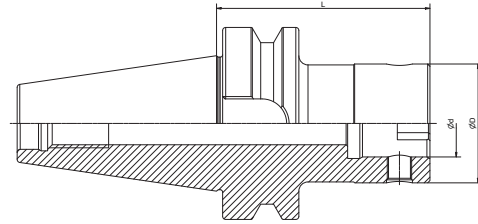
## BORING 工具系统

BT Boring Tool Holder.....	L.04
BT 镗刀柄.....	L.04
SK Boring Tool Holder .....	L.06
SK 镗刀柄.....	L.06
HSK Boring Tool Holder.....	L.08
HSK 镗刀柄.....	L.08
BT Bridge Boring Tool Holder.....	L.11
BT 桥镗刀柄.....	L.11
SK Bridge Boring Tool Holder.....	L.12
SK 桥镗刀柄.....	L.12
HSK Bridge Boring Tool Holder.....	L.12
HSK 桥镗刀柄.....	L.12
Boring Tool Holder Extension.....	L.13
CK 刀柄延长器.....	L.13
Boring Tool Holder Reducer.....	L.14
CK 刀柄减径套.....	L.14
Fine Boring Head.....	L.15
精镗头.....	L.15
Fine Back Boring Head.....	L.16
反向精镗头.....	L.16
Twin Cutter Rough Boring Head .....	L.17
双刃粗镗刀.....	L.17
Bridge Fine Boring Head .....	L.18
桥式精镗刀.....	L.18
Bridge Roring Boring Head .....	L.19
桥式双刃粗镗刀.....	L.19



## Boring Tool Holder

### 镗刀柄

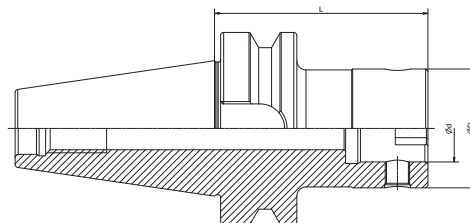


Size	CK No.	D	d	L
BT30-CK1-55	CK1	19	11	55
BT30-CK1-70	CK1	19	11	70
BT30-CK2-80	CK2	24	14	80
BT30-CK3-80	CK3	31	18	80
BT30-CK4-70	CK4	39	22	70
BT30-CK5-70	CK5	50	28	70
BT30-CK6-60	CK6	64	36	60
BT40-CK1-70	CK1	19	11	70
BT40-CK1-100T	CK1	19	11	100
BT40-CK1-130T	CK1	19	11	130
BT40-CK2-75	CK2	24	14	75
BT40-CK2-100	CK2	24	14	100
BT40-CK2-130T	CK2	24	14	130
BT40-CK2-160T	CK2	24	14	160
BT40-CK3-80	CK3	31	18	80
BT40-CK3-100	CK3	31	18	100
BT40-CK3-135T	CK3	31	18	135
BT40-CK3-165T	CK3	31	18	165
BT40-CK4-70	CK4	39	22	70
BT40-CK4-100	CK4	39	22	100
BT40-CK4-150T	CK4	39	22	150
BT40-CK4-170T	CK4	39	22	170
BT40-CK5-80	CK5	50	28	80
BT40-CK5-150	CK5	50	28	150
BT40-CK5-180	CK5	50	28	180
BT40-CK6-100	CK6	64	36	100
BT40-CK6-150	CK6	64	36	150
BT40-CK6-180	CK6	64	36	180

T refers to cutter side with taper design

T 代表刀具端锥柄设计

## Boring Tool Holder 镗刀柄



Size	CK No.	D	d	L
BT50-CK1-80	CK1	19	11	80
BT50-CK1-115T	CK1	19	11	115
BT50-CK1-145T	CK1	19	11	145
BT50-CK2-80	CK2	24	14	80
BT50-CK2-105	CK2	24	14	105
BT50-CK2-135T	CK2	24	14	135
BT50-CK2-165T	CK2	24	14	165
BT50-CK3-85	CK3	31	18	85
BT50-CK3-110	CK3	31	18	110
BT50-CK3-140T	CK3	31	18	140
BT50-CK3-170T	CK3	31	18	170
BT50-CK4-100	CK4	39	22	100
BT50-CK4-160T	CK4	39	22	160
BT50-CK4-205T	CK4	39	22	205
BT50-CK5-90	CK5	50	28	90
BT50-CK5-165	CK5	50	28	165
BT50-CK5-210T	CK5	50	28	210
BT50-CK5-270T	CK5	50	28	270
BT50-CK6-85	CK6	64	36	85
BT50-CK6-155	CK6	64	36	155
BT50-CK6-215	CK6	64	36	215
BT50-CK6-250	CK6	64	36	250
BT50-CK6-300T	CK6	64	36	300
BT50-CK6-350T	CK6	64	36	350
BT50-CK7-85	CK7	90	46	85
BT50-CK7-100	CK7	90	46	100
BT50-CK7-150	CK7	90	46	150
BT50-CK7-250	CK7	90	46	250
BT50-CK7-300	CK7	90	46	300
BT50-CK7-350	CK7	90	46	350

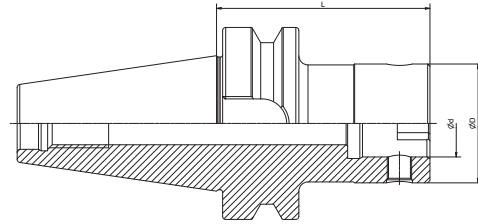
T refers to cutter side with taper design

T 代表刀具端锥柄设计



## Boring Tool Holder

### 镗刀柄



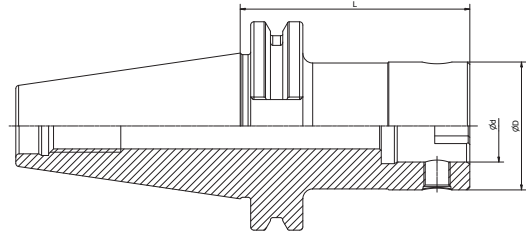
Size	CK No.	D	d	L
BBT40-CK1-70	CK1	19	11	70
BBT40-CK1-100T	CK1	19	11	100
BBT40-CK2-75	CK2	24	14	75
BBT40-CK2-100	CK2	24	14	100
BBT40-CK2-160T	CK2	24	14	160
BBT40-CK3-80	CK3	31	18	80
BBT40-CK3-100	CK3	31	18	100
BBT40-CK3-165T	CK3	31	18	165
BBT40-CK4-70	CK4	39	22	70
BBT40-CK4-100	CK4	39	22	100
BBT40-CK4-150T	CK4	39	22	150
BBT40-CK5-80	CK5	50	28	80
BBT40-CK5-150	CK5	50	28	150
BBT40-CK6-100	CK6	64	36	100

T refers to cutter side with taper design

T 代表刀具端锥柄设计

## Boring Tool Holder

### 镗刀柄



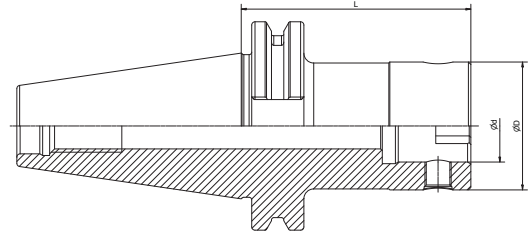
Size	CK No.	D	d	L
SK30-CK1-70	CK1	19	11	70
SK30-CK2-70	CK2	24	14	70
SK30-CK3-75	CK3	31	18	75
SK30-CK4-50	CK4	39	22	50
SK30-CK5-50	CK5	50	28	50
SK30-CK6-60	CK6	64	36	60
SK40-CK1-70	CK1	19	11	70
SK40-CK1-100	CK1	19	11	100
SK40-CK2-50	CK2	24	14	50
SK40-CK2-100	CK2	24	14	100
SK40-CK3-50	CK3	31	18	50
SK40-CK3-100	CK3	31	18	100
SK40-CK3-135T	CK3	31	18	135
SK40-CK3-165T	CK3	31	18	165
SK40-CK4-50		39	22	20
SK40-CK4-100	CK4	39	22	100
SK40-CK4-150T	CK4	39	22	150
SK40-CK5-80	CK5	50	28	50
SK40-CK5-100	CK5	50	28	100
SK40-CK5-150	CK5	50	28	150
SK40-CK5-180	CK5	50	28	180
SK40-CK6-90	CK6	64	36	90
SK40-CK6-150	CK6	64	36	150
SK40-CK6-180	CK6	64	36	180
SK40-CK7-100	CK7	90	46	100

T refers to cutter side with taper design

T 代表刀具端锥柄设计

## Boring Tool Holder

### 镗刀柄



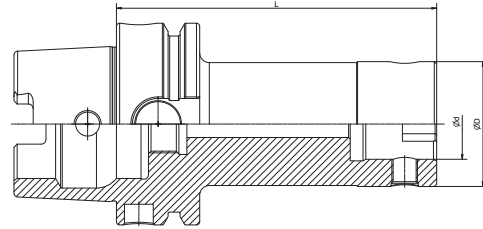
Size	CK No.	D	d	L
SK50-CK1-80	CK1	19	11	80
SK50-CK2-80	CK2	24	14	80
SK50-CK2-105	CK2	24	14	105
SK50-CK2-135T	CK2	24	14	135
SK50-CK2-165T	CK2	24	14	165
SK50-CK3-85	CK3	31	18	85
SK50-CK3-110	CK3	31	18	110
SK50-CK3-140T	CK3	31	18	140
SK50-CK3-170T	CK3	31	18	170
SK50-CK4-70	CK4	39	22	70
SK50-CK4-100	CK4	39	22	100
SK50-CK4-160T	CK4	39	22	160
SK50-CK4-200T	CK4	39	22	200
SK50-CK5-90	CK5	50	28	90
SK50-CK5-160	CK5	50	28	160
SK50-CK5-210T	CK5	50	28	210
SK50-CK5-250T	CK5	50	28	250
SK50-CK6-85	CK6	64	36	85
SK50-CK6-160	CK6	64	36	160
SK50-CK6-200	CK6	64	36	200
SK50-CK6-250	CK6	64	36	250
SK50-CK6-300T	CK6	64	36	300
SK50-CK7-85	CK7	90	46	85
SK50-CK7-150	CK7	90	46	150
SK50-CK7-210	CK7	90	46	210
SK50-CK7-250	CK7	90	46	250
SK50-CK7-300	CK7	90	46	300
SK50-CK7-350	CK7	90	46	350

T refers to cutter side with taper design

T 代表刀具端锥柄设计

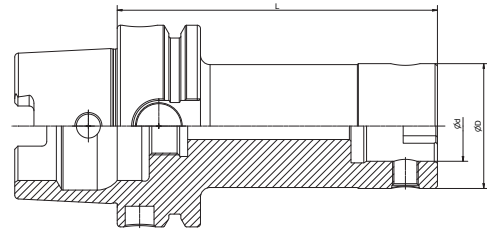
## Boring Tool Holder

### 镗刀柄



Size	CK No.	D	d	L
HSK40A-CK1-75	CK1	19	11	75
HSK40A-CK2-85	CK2	24	14	85
HSK40A-CK3-80	CK3	31	18	80
HSK40A-CK4-75	CK4	39	22	75
HSK50A-CK1-75	CK1	19	11	75
HSK50A-CK2-85	CK2	24	14	85
HSK50A-CK3-80	CK3	31	18	80
HSK50A-CK4-75	CK4	39	22	75
HSK50A-CK5-85	CK5	50	28	85

## Boring Tool Holder 镗刀柄



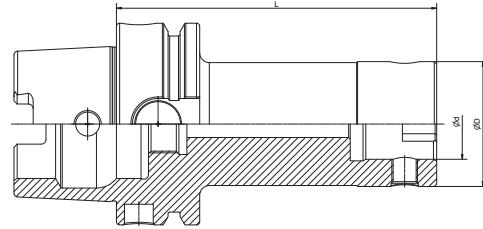
Size	CK No.	D	d	L
HSK63A-CK1-70	CK1	19	11	70
HSK63A-CK1-100T	CK1	19	11	100
HSK63A-CK2-75	CK2	24	14	75
HSK63A-CK2-100	CK2	24	14	100
HSK63A-CK2-130T	CK2	24	14	130
HSK63A-CK3-80	CK3	31	18	80
HSK63A-CK3-100	CK3	31	18	100
HSK63A-CK3-135T	CK3	31	18	135
HSK63A-CK3-165T	CK3	31	18	165
HSK63A-CK4-70	CK4	39	22	70
HSK63A-CK4-100	CK4	39	22	100
HSK63A-CK4-150T	CK4	39	22	150
HSK63A-CK4-170T	CK4	39	22	170
HSK63A-CK5-80	CK5	50	28	80
HSK63A-CK5-100	CK5	50	28	100
HSK63A-CK5-150	CK5	50	28	150
HSK63A-CK5-180	CK5	50	28	180
HSK63A-CK6-100	CK6	64	36	100
HSK63A-CK6-150	CK6	64	36	150
HSK63A-CK6-180	CK6	64	36	180

T refers to cutter side with taper design

T 代表刀具端锥柄设计

## Boring Tool Holder

### 镗刀柄

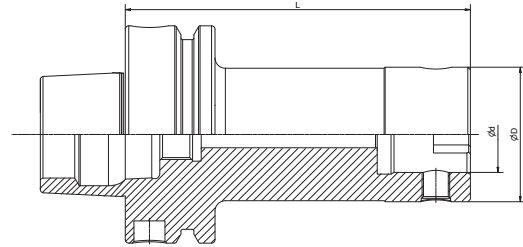


Size	CK No.	D	d	L
HSK100A-CK1-115	CK1	19	11	115
HSK100A-CK1-145T	CK1	19	11	145
HSK100A-CK2-105	CK2	24	14	105
HSK100A-CK2-135	CK2	24	14	135
HSK100A-CK2-165	CK2	24	14	165
HSK100A-CK3-110	CK3	31	18	110
HSK100A-CK3-140T	CK3	31	18	140
HSK100A-CK3-170T	CK3	31	18	170
HSK100A-CK4-100	CK4	39	22	100
HSK100A-CK4-160T	CK4	39	22	160
HSK100A-CK4-205T	CK4	39	22	205
HSK100A-CK5-90	CK5	50	28	90
HSK100A-CK5-165	CK5	50	28	165
HSK100A-CK5-210T	CK5	50	28	210
HSK100A-CK5-270T	CK5	50	28	270
HSK100A-CK6-85	CK6	64	36	85
HSK100A-CK6-155	CK6	64	36	155
HSK100A-CK6-215	CK6	64	36	215
HSK100A-CK6-250	CK6	64	36	250
HSK100A-CK6-300T	CK6	64	36	300
HSK100A-CK7-125	CK7	90	46	125
HSK100A-CK7-200	CK7	90	46	200
HSK100A-CK7-275	CK7	90	46	275

T refers to cutter side with taper design

T 代表刀具端锥柄设计

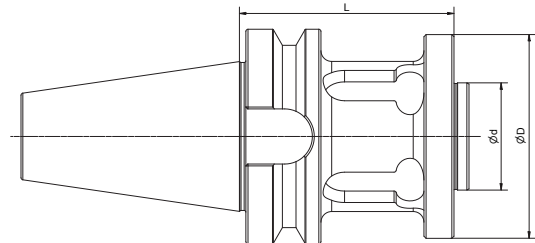
**Boring Tool Holder**  
镗刀柄



Size	CK No.	D	L	L1	A
HSK63F-CK1-78	CK1	19	110	77.5	73
HSK63F-CK2-90	CK2	24	125	89.5	94
HSK63F-CK3-100	CK3	31	140	100	108
HSK63F-CK4-93	CK4	39	140	93	108
HSK63F-CK5-83	CK5	50	140	83	114

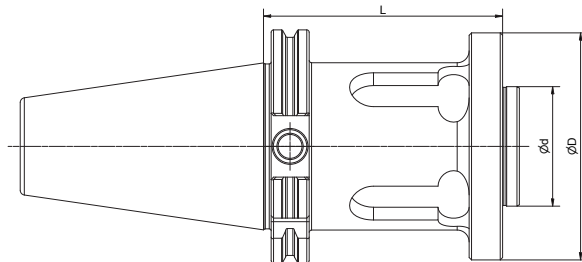
TOOL HOLDER JIS B 6399

**Bridge Boring Tool Holder**  
BST 桥镗刀柄



Size	D	d	L
BT40-BST-60	95	50	60
BT40-BST-100	95	50	100
BT40-BST-150	95	50	150
BT50-BST-100	95	50	100
BT50-BST-150	95	50	150
BT50-BST-200	95	50	200
BT50-BST-250	95	50	250
BT50-BST-300	95	50	300
BT50-BST-350	95	50	350
BT50-BST-100	95	50	100
BT50-BST-250	95	50	250

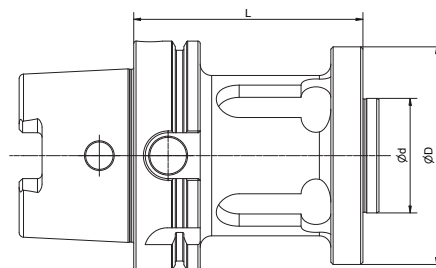
## Bridge Boring Tool Holder BST 桥镗刀柄



Size	D	d	L
SK40-BST-60	95	50	60
SK50-BST-100	95	50	100
SK50-BST-150	95	50	150
SK50-BST-200	95	50	200
SK50-BST-250	95	50	250
SK50-BST-300	95	50	300
SK50-BST-100	95	50	100
SK50-BST-250	95	50	250

## TOOL HOLDER DIN 69893(ISO 12164-1)HSK-A

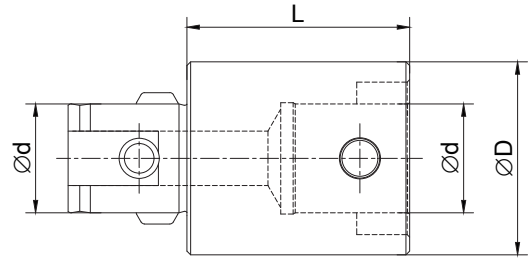
## Bridge Boring Tool Holder BST 桥镗刀柄



Size	D	d	L
HSK100A-BST-100	95	50	100
HSK100A-BST-150	95	50	150
HSK100A-BST-200	95	50	200
HSK100A-BST-250	95	50	250
HSK100A-BST-300	95	50	300



## Boring Tool Holder Extension CK 刀柄延长器

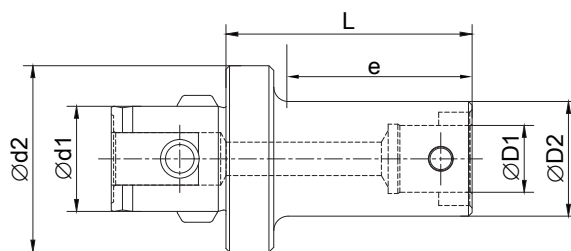


Size	CK No.	d	D	L
CK1-1-30	CK1	11	19	30
CK1-1-100	CK1	11	19	100
CK2-2-30	CK2	14	24	30
CK2-2-100	CK2	14	24	100
CK2-2-150	CK2	14	24	150
CK3-3-30	CK3	18	31	30
CK3-3-100	CK3	18	31	100
CK3-3-150	CK3	18	31	150
CK4-4-45	CK4	22	39	45
CK4-4-100	CK4	22	39	100
CK4-4-150	CK4	22	39	150
CK5-5-60	CK5	28	50	60
CK5-5-100	CK5	28	50	100
CK5-5-150	CK5	28	50	150
CK6-6-60	CK6	36	64	60
CK6-6-100	CK6	36	64	100
CK6-6-150	CK6	36	64	150

**Usage:** connect boring tool holder and boring head, to extend the working depth.

## Boring Tool Holder Reducer

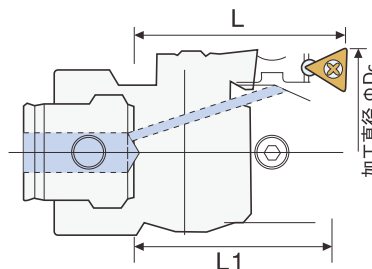
### CK 刀柄减径套



Size	CK No	d1	d2	D1	D2	L	e
CK2-1-36	CK2	14	24	11	19	36	30
CK3-1-41	CK3	18	31	11	19	41	30
CK3-2-37	CK3	18	31	14	24	37	25
CK4-1-58	CK4	22	39	11	19	58	40
CK4-2-50	CK4	22	39	14	24	50	36
CK4-3-50	CK4	22	39	18	31	50	37
CK5-1-60	CK5	28	50	11	19	60	40
CK5-2-54	CK5	28	50	14	24	54	35
CK5-2-74	CK5	28	50	14	24	74	55
CK5-3-47	CK5	28	50	18	31	47	29
CK5-3-72	CK5	28	50	18	31	72	54
CK5-4-42	CK5	28	50	22	39	42	25
CK5-4-67	CK5	28	50	22	39	67	50
CK6-1-70	CK6	36	64	11	19	70	40
CK6-2-63	CK6	36	64	14	24	63	45
CK6-2-93	CK6	36	64	14	24	93	75
CK6-3-56	CK6	36	64	18	31	56	39
CK6-3-96	CK6	36	64	18	31	96	79
CK6-4-51	CK6	36	64	22	39	51	35
CK6-4-101	CK6	36	64	22	39	101	85
CK6-5-41	CK6	36	64	28	52	41	25
CK6-5-91	CK6	36	64	28	52	91	75
BST-CK6	CK6	50	95	36	64	100	60

**Usage:** to connect with small size boring head.

## Fine Boring Head 精镗头

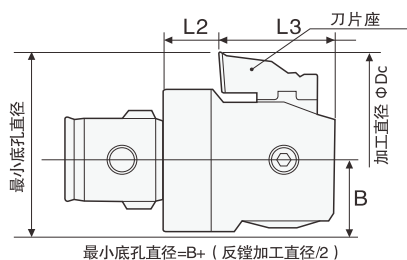


Size	CK No.	Dc	L	L1	Insertholder	Insert/ Screw/ Wrench
CK1-F2025	CK1	20-25	30	27	ENH1-1	TP*08020*L/M2.0/T6
CK1-F2529	CK1	25-29	30	27	ENH1-2	TP*08020*L/M2.0/T6
CK1-F3034	CK1	30-34	30	27	ENH1-3	TP*08020*L/M2.0/T6
CK2-F2533	CK2	25-33	34	31	ENH2-1	TP*08020*L/M2.0/T6
CK2-F3240	CK2	32-40	34	31	ENH2-2	TP*08020*L/M2.0/T6
CK2-F3947	CK2	39-47	34	31	ENH2-3	TP*08020*L/M2.0/T6
CK3-F3243	CK3	32-43	41	37	ENH3-1	TP*08020*L/M2.0/T6
CK3-F4151	CK3	41-51	41	37	ENH3-2	TP*08020*L/M2.0/T6
CK3-F5060	CK3	50-60	41	37	ENH3-3	TP*08020*L/M2.0/T6
CK4-F4156	CK4	41-56	50	42	ENH4-1	TC*11020*L/M2.5/T8
CK4-F5167	CK4	51-67	50	42	ENH4-2	TC*11020*L/M2.5/T8
CK4-F6477	CK4	64-77	50	42	ENH4-3	TC*11020*L/M2.5/T8
CK5-F5274	CK5	52-74	60	56	ENH5-1	TC*11020*L/M2.5/T8
CK5-F6487	CK5	64-87	60	56	ENH5-2	TC*11020*L/M2.5/T8
CK5-F77100	CK5	77-100	60	56	ENH5-3	TC*11020*L/M2.5/T8
CK6-F68103	CK6	68-103	70	66	ENH6-1	TC*11020*L/M2.5/T8
CK6-F95128	CK6	95-128	70	66	ENH6-2	TC*11020*L/M2.5/T8
CK6-F118153	CK6	118-153	70	66	ENH6-3	TC*11020*L/M2.5/T8
CK6-F100152	CK6	100-152	70	66	ENH6-1	TC*11020*L/M2.5/T8
CK6-F126179	CK6	126-179	70	60	ENH6-2	TC*11020*L/M2.5/T8
CK6-F151203	CK6	151-203	70	60	ENH6-3	TC*11020*L/M2.5/T8

**Delivery:**

F\*-1 insert seat is included, please order F\*-2 and F\*-3 separately.  
Insert excluded, please purchase separately.

## Fine Back Boring Head 反向精镗头

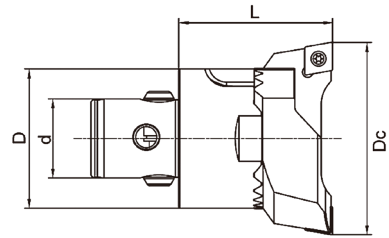


Size	CK No.	Dc	L2	L3	B	Insertholder	Insert/ Screw/ Wrench
CK1-BF3031	CK1	30-31	10.5	19	10	ENH1-2	TP*08020*L/M2.0/T6
CK1-BF3036	CK1	30-36	10.5	19	10	ENH1-3	TP*08020*L/M2.0/T6
CK2-BF3640	CK2	36- 40	11.5	21	12.5	ENH2-2	TP*08020*L/M2.0/T6
CK2-BF3947	CK2	39-47	11.5	21	12.5	ENH2-3	TP*08020*L/M2.0/T6
CK3-BF4651	CK3	46-51	10	25	16	ENH3-2	TP*08020*L/M2.0/T6
CK3-BF5060	CK3	50- 60	10	25	16	ENH3-3	TP*08020*L/M2.0/T6
CK4-BF5363	CK4	53 - 63	14	29	20	ENH4-2	TC*11020*L/M2.5/T8
CK4-BF6479	CK4	64-79	14	29	20	ENH4-3	TC*11020*L/M2.5/T8
CK5-BF6270	CK5	62-70	19	34	25.5	ENH5-1	TC*11020*L/M2.5/T8
CK5-BF6582	CK5	65-82	19	34	25.5	ENH5-2	TC*11020*L/M2.5/T8
CK5-BF7895	CK5	78- 95	19	34	25.5	ENH5-3	TC*11020*L/M2.5/T8
CK6-BF80100	CK6	80-100	22	45.2	32.5	ENH6-1	TC*11020*L/M2.5/T8
CK6-BF94126	CK6	94-126	22	45.2	32.5	ENH6-2	TC*11020*L/M2.5/T8
CK6-BF118150	CK6	118-150	22	45.2	32.5	ENH6-3	TC*11020*L/M2.5/T8
CK6-BF112153	CK6	112-153	22	45.2	45.5	ENH6-1	TC*11020*L/M2.5/T8
CK6-BF126179	CK6	126-179	22	45.2	45.5	ENH6-2	TC*11020*L/M2.5/T8
CK6-BF150203	CK6	150-203	22	45.2	45.5	ENH6-3	TC*11020*L/M2.5/T8

### Delivery:

F\*-1 insert seat is included, please order F\*-2 and F\*-3 separately.  
Insert excluded, please purchase separately.

## Twin Cutter Rough Boring Head 双刃粗镗刀

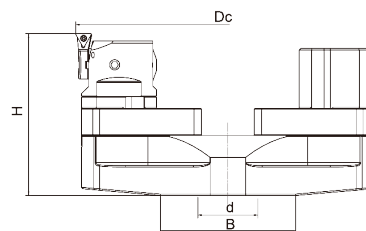


Size	CK No.	Dc	L	Insert	Screw	Wrench
CK1-R2025	CK1	20-25	33	CCMT06020	M2.5	T8
CK2-R2533	CK2	25-33	37	CCMT06020	M2.5	T8
CK3-R3245	CK3	32-45	41	CCMT09T30	M2.5	T15
CK4-R4055	CK4	40-55	50	CCMT09T30	M4.0	T15
CK5-R5275	CK5	52-75	59	CCMT09T30	M4.0	T15
CK6-R6895	CK6	68-95	70	CCMT12040	M5.0	T20
CK6-R90110	CK6	90-110	70	CCMT12040	M5.0	T20

**Delivery:** inserts excluded, please purchase separately.  
Please specify boring head and insert seat size.

## Bridge Fine Boring Head

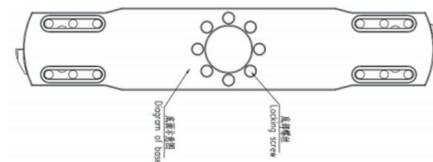
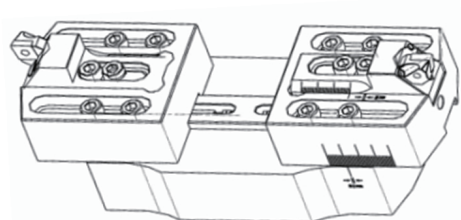
### 桥式精镗刀



Size	Dc	L	Insert	Screw	Wrench	Lockingscrew	Screw of slider
CBJ200310	200-310	100	TC*1102	M2.5	T8	M10*35L(8PCS)	M8*35L(8PCS)
CBJ300410	300-410	100	TC*1102	M2.5	T8	M10*35L(8PCS)	M8*35L(8PCS)
CBJ400510	400-510	100	TC*1102	M2.5	T8	M10*35L(8PCS)	M8*35L(8PCS)
CBJ500610	500-610	100	TC*1102	M2.5	T8	M10*35L(8PCS)	M8*35L(8PCS)
CBJ600710	600-710	100	TC*1102	M2.5	T8	M10*35L(8PCS)	M8*35L(8PCS)
CBJ700810	700-810	100	TC*1102	M2.5	T8	M10*35L(8PCS)	M8*35L(8PCS)
CBJ8001400	800-1400	100	TC*1102	M2.5	T8	M10*35L(8PCS)	M8*35L(8PCS)

**Delivery:** insert excluded, please purchase separately.

## Bridge Rough Boring Head 桥式双刃粗镗刀



Size	D	L	Boringadapter	Insert/ Screw/ Wrench	Lockingscrew
RBJ200	200-310	100	BST	CCMT12040*/M5.0*12/T20	M12*30
RBJ300	300-410	100	BST	CCMT12040*/M5.0*12/T20	M12*30
RBJ400	400-510	100	BST	CCMT12040*/M5.0*12/T20	M12*30
RBJ500	500-610	100	BST	CCMT12040*/M5.0*12/T20	M12*30
RBJ600	600-710	100	BST	CCMT12040*/M5.0*12/T20	M12*30
RBJ700	700-810	100	BST	CCMT12040*/M5.0*12/T20	M12*30
RBJ800	800-1400	100	BST	CCMT12040*/M5.0*12/T20	M12*30

**Delivery:** inserts excluded, please purchase separately.